

Loch Erin News
Published by the
Loch Erin Property Owners
Association

A Housing Association
P.O. Box 302
Onsted, Michigan 49265
(517) 467-4834

Email:

[locherinproperty@
gmail.com](mailto:locherinproperty@gmail.com)

Website:

[www.locherinproperty
ownersassociation.com](http://www.locherinpropertyownersassociation.com)

Meetings:

2nd Monday Every Month
(Except Holidays; 3rd Monday.
May meeting is 3rd Sunday at
2pm)

Cambridge Township Hall
7:00 pm

All members are encouraged
to attend.

A Message from our President..

The calendar says it is Spring, and the ice was off the Lake around March 10th after numerous weeks of ice cover. We have experienced some really nice weather leading up to March 21st and that means the weather will be improving and the lawns and flowers will recover from their dormant state. Lake level will be restored by the Lenawee Drain Commission starting March 31st, and docks will be installed within our Loch Erin Park system in the upcoming days/weeks. Spring is also the season for our LEPOA Annual meeting in May, and the election process for our members to cast their votes for the candidates seeking to serve on the LEPOA Board. Currently we have two incumbent Board members who have indicated that they will not be seeking re-election, so this newsletter is again seeking volunteers from our LEPOA community who would like to have their name added to the ballot for consideration. As you know Board members volunteer their time to address the various issues that are raised by our LEPOA members, and I encourage you to get to know these individuals prior to the election process. The ballot deadline was revised through discussion and agreement with the Election committee. The date is now April 1st, and the ballots will be placed on our LEPOA website and also sent via email to our members. During the Annual meeting we will pause for the Election committee to count the ballots, and the results will be announced when the meeting is reconvened. At that time, the newly elected Board will discuss nominations for the Officer roles and those individuals can share their viewpoints for the Board to consider as part of the selection process. Considering the various challenges associated with the avian flu, we anticipate a 'Goose Roundup' will not be authorized, however we will be proceeding with an alternative for goose population control this Spring, and we are obtaining necessary approvals from the various State agencies like last year. Also, I believe one of our residents continues to post photos of the majestic eagles that call Loch Erin home, which validates the health of our Lake and surrounding wildlife habitat. So, in conclusion, the Spring season is the gateway to warmer weather and numerous water activities on the Lake, so I ask that you review the various safety regulations associated with swimming, boating, skiing, tubing and fishing with your Family and friends to ensure everyone has an enjoyable day on the water.

UPCOMING EVENTS

Annual Meeting & Elections-
Sunday May 18, 2025 at 2pm
Location Cambridge Township
Hall
Ballot is located on
our website

**2025 LOCH ERIN EVENT
SCHEDULE**

The Friends of Loch Erin have
proposed the following dates and
events for the 2025 Season.

Memorial Day - Saturday May
24th

LE Annual Garage Sale, FOLE
Rummage & Craft Sale Event -
Friday/Saturday June 13th & 14th
SMOKE ON THE WATER - Friday,
July 4th with rain date of
Saturday July 5th
Labor Day - Sunday, August 31st

Vehicle Sticker Reminder

Our vehicle stickers for 2025 are now ORANGE! Make sure the correct sticker is adhered to the vehicle and is visible to avoid being towed. You must be a member in good standing and have paid your 2025 dues. To get stickers please call or email Jordin at the office.



Dock Slip Renters

Our docks are in! Our port a johns will be put in sometime in April. Please make sure to take a trip to the launch and make sure your gate card is working to prevent delays this spring. If you have any issues with your card please contact Jordin at the office.

Need a Gate Card?

Gate Card agreements are available on our website. Only members in good standing will receive a gate card. Dues for 2025 must be paid before submitting a request. The form is available on the website or you can reach out to Jordin at the office!

Association Dues

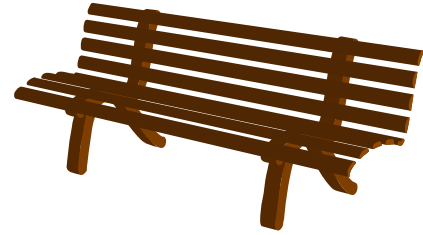
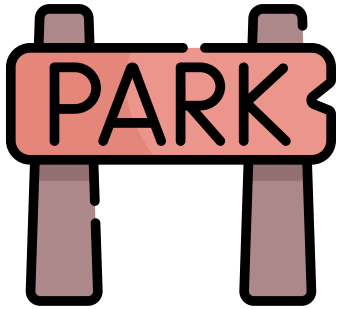
Loch Erin Association dues of \$175.00 are due May 1, 2025. Please pay these dues on or before the May 1st due date. Non-payment will result in no park use, no lake use, and gate card deactivation. If payment is not received or a payment plan established, a lien will be filed.

ATTENTION BOATERS

If you would like to get a boat slip this year now is the time. We have a limited number of openings so get your dock slip agreement mailed in soon! To lease a slip the dock slip agreement, \$175 annual dues per lot, and \$200 slip fee need to be mailed to our PO Box 302 in Onsted. Please let Jordin know at the office if you have any questions!

Important Numbers: EMERGENCY CALL 911

LEPOA General 517-467-4834 Drain Commission 517-264-4696
County Sheriff General 517-263-0524 DEQ (local officer) 517-648-5847
Boating/Hunting Laws 517-373-1230 Cambridge Twp. 517-467-2104
Road Com./snow removal 517-265-6971 Franklin Township 517-431-2320



A message from Kathy Z

Just a reminder, this season, you will not need to bring an additional person with you, to let the person out that delivers your boat. Last year, we made an upgrade that will eliminate this step, and your boat delivery person will be able to drive out without your help. Upgrades were also made to the gate system, so hopefully this season will go much smoother.

I still need a list of Volunteers, initially for landscape type projects specifically at Eberly Park and Galway Park. You can work at your leisure, or we can set up a specific day, or even do a work chart. We have put a great deal of money into both parks, and the sand needs to be raked, and kept up. There are weeds that need to be pulled, and we really need more help. Even 30 minutes to one hour a week per person would still make a huge difference. In the past, we did have a company come in and rake these 2 parks weekly. I will unfortunately have to get bids and add this to the budget if we don't get any volunteers.

Our dock system is a work in progress, and each year, it gets better. Many docks have already been replaced. Many more docks will be replaced this season, and we will continue to work on this until we complete this project. The safety of our members continues to be our highest priority. If you see a problem or an issue with a dock or at one of our parks, please call me, so that we can take care of it as soon as possible.

Kathy Zmijewski

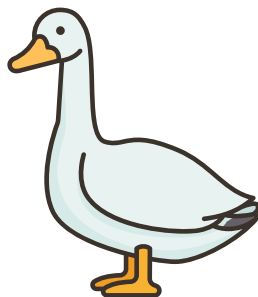
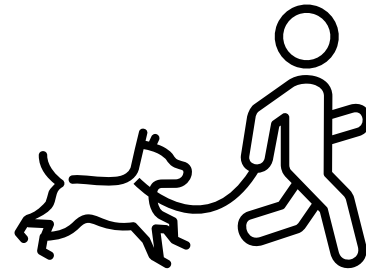
CAUTION: CHILDREN AT PLAY



Please remember to be cautious when traveling through the Loch Erin subdivisions. Children will be outdoors running, riding bikes and playing outside this spring. We encourage all members to travel at safe speeds to ensure the safety of all members. Help make every effort to keep our members safe!

Do You Have a Furry Family Member?

Please remember to keep your dog on a leash at all times. This is very important for the safety of others walking in the neighborhood as well as cars driving through the neighborhood. Please clean up after your dog and help keep our neighborhood a beautiful place for all to enjoy!



LEPOA will be contracting Goosebusters again this year to perform Egg and Nest destruction to help with the Goose population control. Any insight on nest location or questions please contact Tom Kanable at 661-210-5035 or by email thkanable@aol.com.

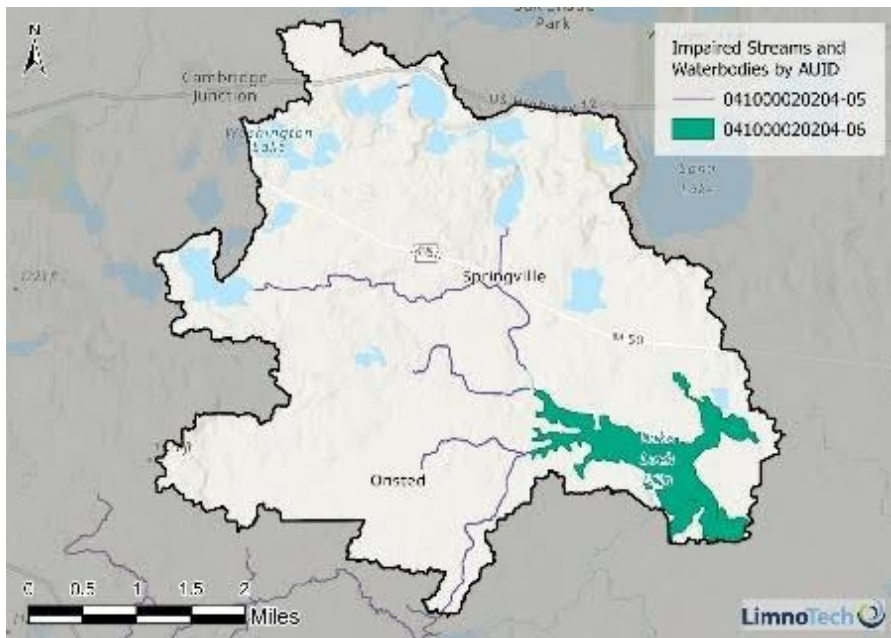
Pickleball Anyone?

If you are interested in learning or playing Pickleball, please contact Tom Sollars for information on teams, game days and practices. Come on out and enjoy some fun! Email: tasollars@comcast.net



Upper Wolf Creek Watershed Management Plan Completed

After almost 3 years of effort, the LEPOA and the River Raisin Watershed Council learned on January 22, 2025 the EPA and EGLE had accepted and approved the Upper Wolf Creek Watershed Management Plan. Working in conjunction with the Lenawee conservation district, Drain Commission, Health Department and environmental consultant LimnoTech a small portion (11,600 acres) of the River Raisin Watershed in northwest Lenawee County was studied in greater detail than the broader River Raisin Watershed Management Plan completed in 2009 (677,800 acres.) The study included determination of land use, slope, flow and runoff information, and a large amount of water sampling in multiple drains and streams as well as a few area lakes. The water samples were analyzed for E.Coli, Phosphorus, Nitrogen and other nutrients. Major water pollutants identified were Phosphorous and E.coli, with likely sources being On-site disposal systems, cropland and residential runoff, livestock operations, wildlife/pet waste.



Recommendations put forth in the study include continued water monitoring and pollutant source tracking, development and implementation of focused outreach and training programs to area residents and protection or expansion of watershed wetlands. Residents may not be aware of the issues caused by failing of overloaded septic systems, and nutrient or pollutant runoff from the fields or properties. It is felt that open discussions and the availability of printed resources will increase overall awareness and encourage proper consideration for our water resources.

Next year, LEPOA and the Watershed Council will be pursuing implementation grants to address several of the recommendations suggested.

A copy of the Upper Wolf Creek plan may be found on the LEPOA website. Copies of both the Upper Wolf Creek plan and the 2009 Complete River Raisin Watershed Management Plan can be found at the River Raisin Watershed Council website.